

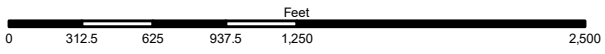
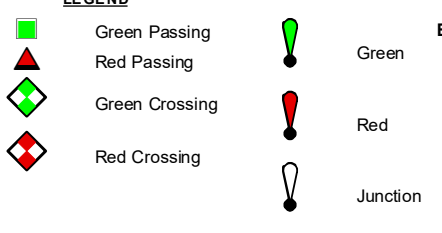
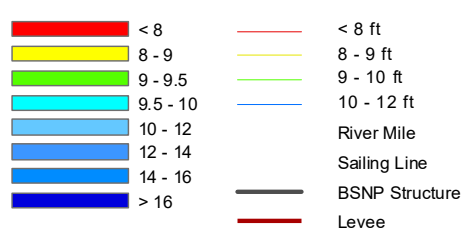
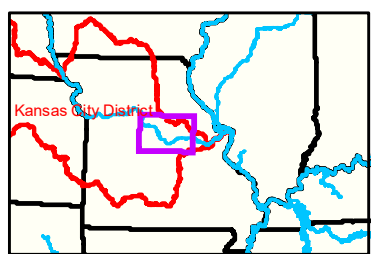
Notes

Callaway County

Osage County

Jefferson City Gage = 7.14 at time of collection 30 October 2020

Gage_L



NOTES:
 Horizontal Coordinate System:
 World Geodetic System of 1984 (WGS84), projected to the Universal Transverse Mercator (UTM) Zone 15 North. Distance units in U.S. Survey Feet

Vertical Datum:
 Soundings are shown in feet and indicated depths are referenced to water surface at time of collection.

The information depicted on this map represents the results of a survey conducted on the date indicated and can only be considered to represent the general condition existing at that time.

The location of navigation aids are based on and provided by the U.S. Coast Guard.

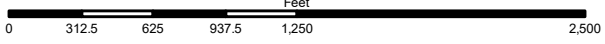
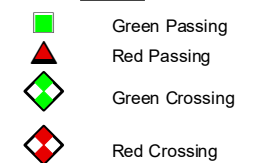
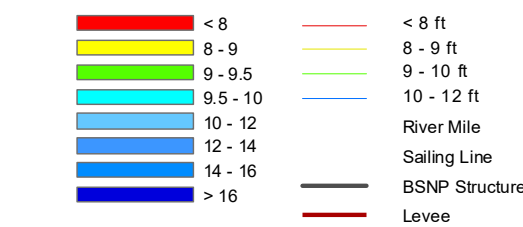
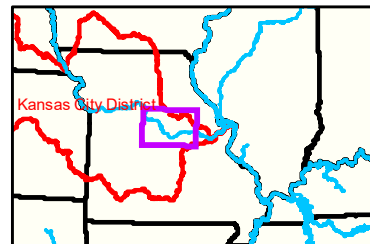
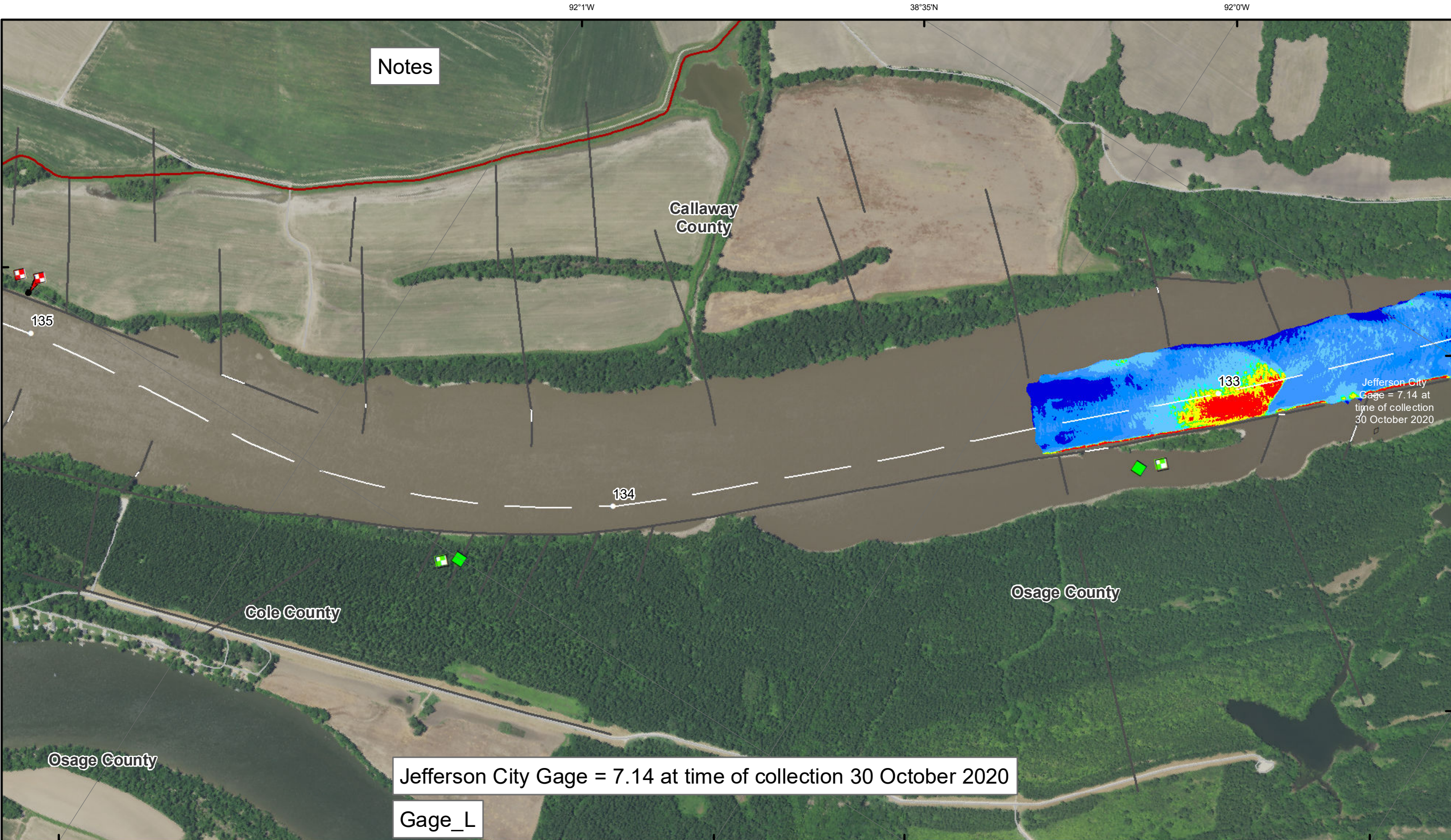


DISCLAIMER: The U.S. Army Corps of Engineers (USACE) provides this information as a service to the public. It is not intended for use in any legal proceeding. The USACE makes no warranty, express or implied, regarding the accuracy, reliability, or completeness of the information. The user assumes all liability for any use of the information. The USACE is not responsible for any errors or omissions in this information. The USACE is not liable for any damages, including consequential damages, arising from the use of this information. The USACE is not responsible for any loss of data or information. The USACE is not responsible for any loss of time or money. The USACE is not responsible for any loss of life or property. The USACE is not responsible for any loss of reputation. The USACE is not responsible for any loss of honor. The USACE is not responsible for any loss of dignity. The USACE is not responsible for any loss of respect. The USACE is not responsible for any loss of honor. The USACE is not responsible for any loss of dignity. The USACE is not responsible for any loss of respect.

KANSAS CITY DISTRICT MISSOURI RIVER AREA OFFICE	
Submitted By:	MRAO
Reviewed By:	MRAO
Approved By:	MRAO

Survey Information
 MO_02_LMR
 MO_02_LMRX_20201030_CS_132_3_133_3_SORT
 30 October 2020

Sheet Number
 15 of 46



NOTES:
 Horizontal Coordinate System:
 World Geodetic System of 1984 (WGS84), projected to the Universal Transverse Mercator (UTM) Zone 15 North. Distance units in U.S. Survey Feet
 Vertical Datum:
 Soundings are shown in feet and indicated depths are referenced to water surface at time of collection.
 The information depicted on this map represents the results of a survey conducted on the date indicated and can only be considered to represent the general condition existing at that time.
 The location of navigation aids are based on and provided by the U.S. Coast Guard.

Notes

Jefferson City Gage = 7.14 at time of collection 30 October 2020

Gage_L



DISCLAIMER: The U.S. Army Corps of Engineers (USACE) provides this information for informational purposes only. It is not intended for use in any legal proceeding or as a basis for any action. The USACE makes no warranty, express or implied, regarding the accuracy, completeness, or timeliness of the information. The USACE is not responsible for any errors or omissions in this information. The user assumes all liability for any use of this information. The USACE is not responsible for any damage or loss resulting from the use of this information. The USACE is not responsible for any delay in the delivery of this information. The USACE is not responsible for any loss of data or information. The USACE is not responsible for any loss of time or money. The USACE is not responsible for any loss of life or property. The USACE is not responsible for any loss of reputation. The USACE is not responsible for any loss of honor. The USACE is not responsible for any loss of dignity. The USACE is not responsible for any loss of respect. The USACE is not responsible for any loss of esteem. The USACE is not responsible for any loss of honor. The USACE is not responsible for any loss of dignity. The USACE is not responsible for any loss of respect. The USACE is not responsible for any loss of esteem.

KANSAS CITY DISTRICT MISSOURI RIVER AREA OFFICE	
Submitted By:	MRAO
Reviewed By:	MRAO
Checked By:	MRAO

Survey Information
 MO_02_LMR
 MO_02_LMRX_20201030_CS_132_3_133_3_SORT
 30 October 2020

Sheet Number
 16 of 46